

OTAG385



OTAG385



standard features

Exterior Design

Windows with Flyscreen and Curtain
Toilet/Bathroom External Door
Was Rear LED Lights with Sequential Indicators *
Was Side Marker Lamps *
Rear Rectangle Reflector
Yellow Reflector
Outside Lighting Leds
Outside Storage Cabinets
Outside Storage Cabinets Lighting
Chrome Cylinder Locks
Chrome Cabinet Hinges
Chrome Cabinet Door Stoppers
Side and Back Pop-up Cover
Expandable Pop-up Roof System with Windows

Interior Design

Electrostatic Powder Coating (Cabinet and Interior Walls)
Compact Laminate Flooring
Ceramic Based Insulation Coating
Inside Storage Cabinets
Cabinet Locked Handles
Cabinet Doors Fixing Pistons
Fabric Hanging Pockets
USB Outlets
12v Power Outlet
Lighting LEDS

Sitting and Sleeping Area

4 Person Seating Area
Seat and Back Cushions
Under Seat Storage Cabinets
Height Adjustable Aluminum Table
24 Inch Smart TV
Side Opening Travel Cover Locks
Secondary Bed Area (195 x 115 cm)

Bedroom

Primary Bed Area
Wardrobe
Storage Drawers
Storage Cabinets

Kitchen Area

Chrome Kitchen Countertop
Kitchen Drawers
Kitchen Cabinets (Under Countertop)
Kitchen Cabinets (Countertop)
Thetford 3 Burner Stoves and Triplex Oven *
Fixed Chrome Kitchen Sink
Hot/Cold Water Faucets
152 Lt Thetford Refrigerator (Or Similar) *

Bathroom / Toilet

Foldable Bathroom Door
Laminate Flooring
Thetford Cassette Toilet (Or Similar) *
Foldable Shower Sink
Chrome Shower Head with Hot / Cold Water
Faucet
Shower Head with Hot / Cold Water Faucet

Electric / Control System

Crawler Smart Panel and Control Box
Schmid Solar Panel 380w *
Invertor 600 w *
Victron Energy 220A AGM Battery (2 Pcs.) *
Victron Blue Smart Charger (20 Amper) *
Defa 220v Charger Input *
Cable and Bag
Lighting Dimmers
Car Electrical Charging System (Cyrx)

Water System

Water Pump (19 Lt/Min)
Water Filler Jack
Chrome Fresh Water Tank (496 Lt)
Chrome Grey Water Tank (126 Lt)
Black Water Tank (17 Lt)
Water Drain Valve

Heating / Cooling / Gas / Fuel System

Truma Combi 6 (Air and Water Heater System) *
Heater Outlet from 6 Points
Truma Duo Switch *
Truma LPG Anti-Freeze System *
Truma Double Gas Valve *
Truma Crash Sensor *
Gas Filter
Gas Detector
Copper Gas System 8mm
Ceiling Hek Glass with In/Out Ventilation

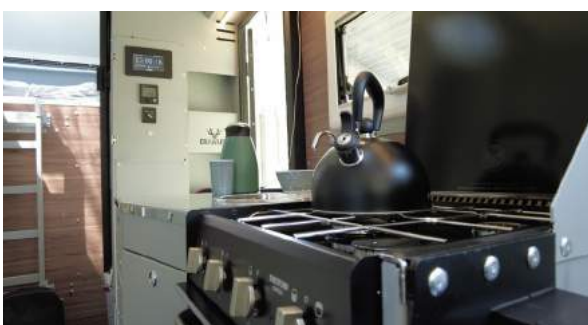
optional features

Layout And Interior Design
Schmid Solar Panel 325W & Charge Regulator *
Solara Solar Panel 160w & Solara Regulator *
Rear Atv / Utv Carrier & Lift
Thule Tent 3 Meters *
Fishing Holder
Gun Holder
Victron Energy 220 Ah Battery (Extra) *
Neta Portatif Uydu *
Truma Aventa Compact Plus Ceiling Type Air
Conditioner *
Water Anti Freeze System
Front Land Crane 24v (18000lb)

* Brands and models may differ depending on the supply status.

**Crawler reserves the right to make changes to product and option features as part of product development efforts.

photos



exterior colors



Ash Grey / Deep Grey Silver Grey Deep Black (Line-X)

technical features

Body: Aluminium

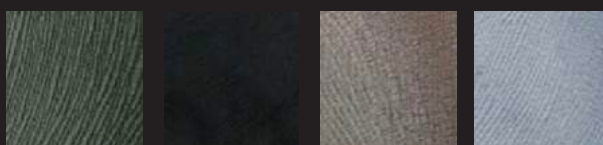
Cabinet Length: Chassis: 3.250 mm Cabin: 3.850 mm

Cabinet Width: 2.350 mm

Cabinet Height: 1.900 mm



upholstery colors



Khaki Green

Carbon Black

Sand Beige

Ice Grey