

CMP190



CMP190



standard features

Exterior Design

Rear Entrance Cover
Retractable Ladder/Rear Door
Fixing Stands with Adjustable Height (2 Pcs)
Extendable Sidewall
Extendable Sidewall Window
Expandable Pop-up Roof System with Windows
Chrome Storage Locks
Chrome Door Stoppers
Chrome Hinges
Gas Bottle Holders (2Pcs)
Was Rear LED Lights *
Storage Cabinets
Lightening of Kitchen Cabinets

Exterior Kitchen Area

Sliding Outdoor Kitchen
Double Stoves
Faucet
Double Plastic Sinks
Stove Windshield
Kitchen Storage Cabinet

Interior Design

Electrostatic Powder Coating (Cabinet and Interior Walls)
PVC Coating Floor
Ceramic Based Insulation Coating
Storage Lockers
Zipped Shelves
Rear Door Flyscreen
Foldable Internal Table
Rails for Upper Bed Area
Internal Window Curtain

Sitting and Sleeping Area

3 Person Seating Area
Under Seat Storage Cabinets
Primary Bed Area (195 x 190 cm)
Secondary Bed Area (165 x 60 cm)
Seat Cushions

Electric / Control System

6 Buttons Analog Control Panel
Battery (40A)
Adjustable LED Internal Lighting with Remote Control
Pako Switch
Victron Blue Smart Charger (7 Amper) *
Defa 220v Charger Input Cable and Bag *
USB Outlets
12v Power Outlet
Interior Lighting Leds
Car Electrical Charging System (Cyrx)

Water System

Water Pump (19 Lt/Min)
Water Level Gauge
Chrome Fresh Water Tank (90 Lt)
Chrome Water Filler Cap
Water Drain Valve

Gas System

Stove Gas Hose
Gas Detect

optional features

Layout And Interior Design
Schmid Solar Panel 325W & Charge Regulator *
Solara Solar Panel 160w & Solara Regulator *
Rear Atv / Utv Carrier & Lift
Thule Tent 3 Meters *
Fishing Holder
Gun Holder
Victron Energy 220 Ah Battery (Extra) *
Neta Portatif Uydu *
Truma Aventa Compact Plus Ceiling Type Air Conditioner *
Water Anti Freeze System
Front Land Crane 24v (18000lb)

* Brands and models may differ depending on the supply status.

**Crawler reserves the right to make changes to product and option features as part of product development efforts.

photos



exterior colors



Dark Grey

Ash Grey

Deep Black
(Line-X)

technical features

Body: Aluminium

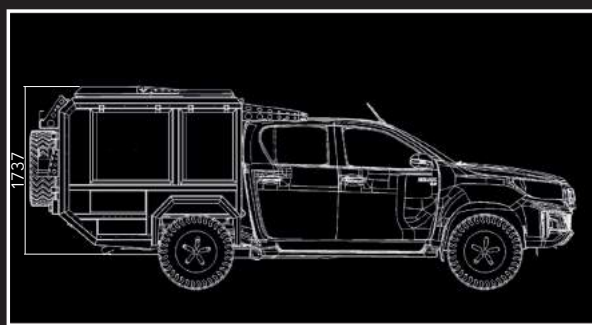
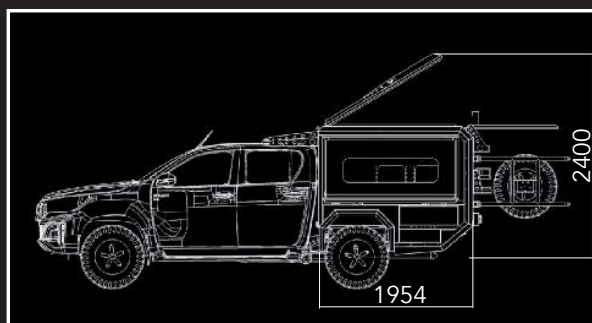
Cabin Length: 1.900 mm

Cabin Width: 1.700 mm

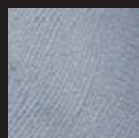
Cabin Height: While Closed 1734 mm - While Open 2400 mm

Cabin Weight: 450 Kg (Cabin)

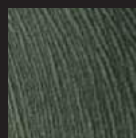
Added Weight is 250 kg (as existing box/bed is removed)



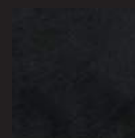
upholstery colors



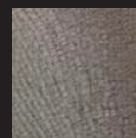
Ice Grey



Khaki
Green



Carbon
Black



Sand Beige